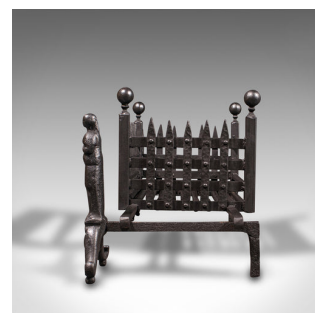
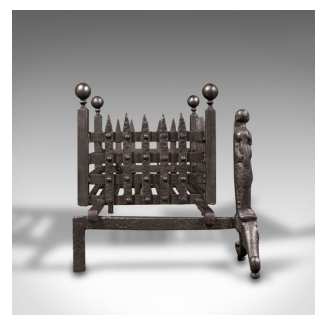


Antique Decorative Fire Basket, English, Iron, Fireplace, Andirons, Victorian



DESCRIPTION

Our Stock # 18.8144

This is an antique decorative fire basket. An English, wrought iron fireplace and figural andirons, dating to the late Victorian period, circa 1900.

- Dashing fireplace with Gothic revival overtones and superb figural fire dogs
- Displaying a desirable aged patina and in good order
- Presented with a good, consistent graphite finish throughout
- Portcullis fire basket adorned with a quartet of finials and barley twist rear brace
- Pair of distinctive andirons, decorated with a figural masque
- Andirons stand upon charming scroll legs to front with straight rear basket rest

This is a striking antique decorative fire basket, with charmingly distinguished figures to each fire dog. A treat for the wider fireplace. Delivered polished and ready for the fireside.

Search [London Fine](#) for #18.8144, or scan the QR code for more photos and details

DIMENSIONS

Max Width: 115cm (45.25")
 Max Depth: 38cm (15")
 Max Height: 40cm (15.75")
 Basket Width: 45.5cm (18")
 Basket Depth: 28.5cm (11.25")
 Basket Height: 20cm (7.75")

