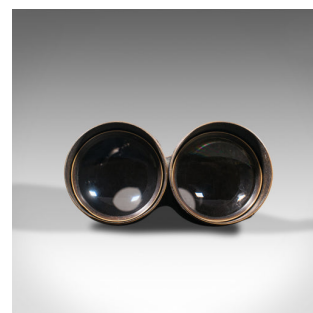


Pair Of Antique Binoculars, English, Brass, Leather, Optical Instrument, C.1920



DESCRIPTION

Our Stock # 18.8165

This is a pair of antique binoculars. An English, brass and leather optical instrument, dating to the early 20th century, circa 1920.

- Wonderfully patinated pair of early 20th century binoculars
- Displaying a desirable aged patina throughout
- Brass frame dressed with aged antique leather
- Bright golden tones with contrasting chestnut tanned leather hues
- Pair of generously sized objective elements - some light residue to right lens
- In working order, ideal for field observation or a night at the opera
- Sliding sun shades provide protection from stray rays
- Focus adjusts with knurled vernier system

This is an attractive pair of antique binoculars, with fascinatingly aged leather and tactile detail throughout. Delivered polished and ready to enjoy.

Search [London Fine for #18.8165](#) , or scan the QR code for more photos and details

DIMENSIONS

Closed Length: 15.5cm (6")

Fully Drawn Length: 21cm (8.25")

Lens Diameter: 50mm (2")

