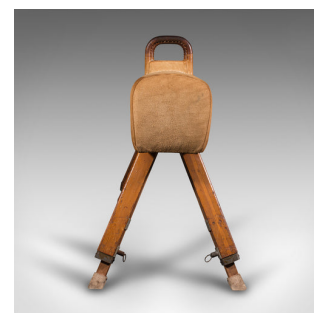
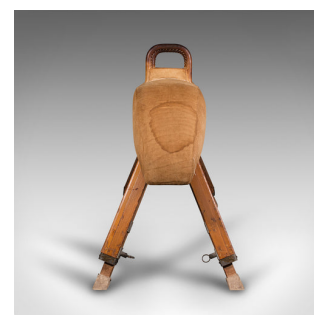


Vintage Gymnastic Pommel Horse, English, Suede, Pine, Athletic, Vaulting, C.1960



DESCRIPTION

Our Stock # 18.8019

This is a vintage gymnastic pommel horse. An English, suede and pine athletic vaulting apparatus, dating to the mid 20th century, circa 1960.

- Supremely solid vaulting horse, ideal for continued use today
- Displays a desirable aged patina with some light marks commensurate with age
- Quality suede dressed tautly over the solid padded top
- Tightly wrapped loop handles benefit from leather recovering
- Enamel maker's mark for the noted London maker 'Spencer Heath and George'
- Rubber feet cups bear the company initials SHG
- Standing upon four splayed, telescopic legs with adjustable height
- Accessed by locking pin, the legs can extend the horse height by up to 46cm (18")

This is a charming vintage gymnastic pommel horse, with a reassuringly solid, lasting quality. Great fun for exercise or as an unusual decorative piece. Solid joints and construction, delivered waxed, polished and ready to enjoy.

Search [London Fine for #18.8019](#), or scan the QR code for more photos and details

DIMENSIONS

Max Width: 164cm (64.5")

Max Depth: 67.5cm (26.5")

Max Height: 108.5cm (42.75") - measured to top of hoops

Pad Width: 30cm (11.75")

Leg Height Adjustment Range: 46cm (18")

