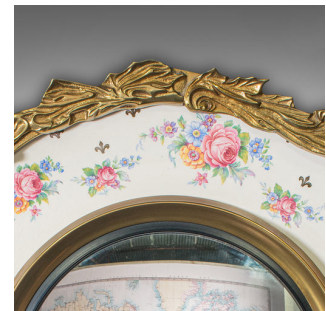


Vintage Convex Mirror, English, Glass, Ceramic, Wall, Italianate Taste, C.1930



DESCRIPTION

Our Stock # 18.7918

This is a vintage convex mirror. An English, glass and ceramic wall mirror with Italianate taste, dating to the early 20th century, circa 1930.

- Distinctive mirror with charming decoration and classical Italian overtones
- Displays a desirable aged patina throughout
- White ceramic ground framed with a bold gilt finished foliate edge
- Convex mirror plate in very good order, with bright reflection and wide angle of view
- Decorative flowerheads accentuate the ceramic frame, with a golden rolled edge to the mirror's circumference
- Mounting chain to rear aids ease of wall hanging
- Maker's stamp to reverse for Burleigh Ware with beehive emblem
- Further reads; Burgess & Leigh Ltd, Est 1851 - Burslem, England

This is a delightful vintage convex mirror, with appealing Italianate taste and the fascination of the wide viewing angle. Delivered polished and ready to mount.

Search [London Fine for #18.7918](#) , or scan the QR code for more photos and details

DIMENSIONS

Max Width: 47cm (18.5")
 Max Depth: 4.5cm (1.75")
 Max Height: 48cm (19")
 Mirror Diameter: 23cm (9")

LIST PRICE

£895.00

