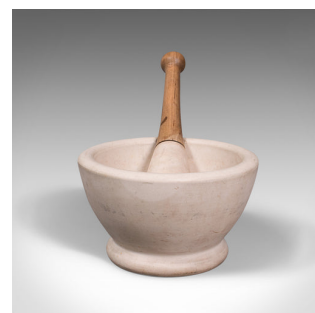


## Antique Mortar and Pestle, English, Ceramic, Apothecary, Cookery Tool, Victorian



### DESCRIPTION

Our Stock # 18.8174

This is an antique mortar and pestle. An English, ceramic and beech apothecary or cookery tool by Wedgwood, dating to the late Victorian period, circa 1900.

- Beautifully presented grinding tool, reassuringly heavy
- Displays a desirable aged patina with light signs of use
- Naturally finished ceramic a tactile delight, with light off-white hues
- Turned beech handle to pestle shows fine grain interest
- Maker's mark to base reads Wedgwood, Best Composition

This is an appealing antique mortar and pestle. As useful today as it was over 100 years ago, it will also make a fine display item upon the work top. Delivered polished and ready to enjoy.

Search [London Fine for #18.8174](#), or scan the QR code for more photos and details

### DIMENSIONS

Mortar Width: 18cm (7")  
Mortar Depth: 17.5cm (7")  
Mortar Height: 10.5cm (4.25")  
Pestle Width: 5.5cm (2.25")  
Pestle Depth: 5.5cm (2.25")  
Pestle Height: 25cm (9.75")

### LIST PRICE

£495.00

