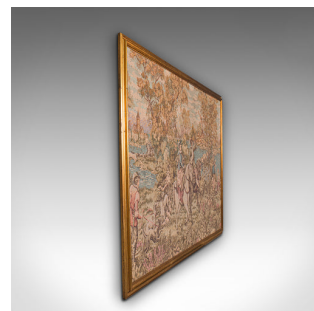


## Large Vintage Panoramic Tapestry, Continental, Needlepoint, Decorative Panel



### DESCRIPTION

Our Stock # 18.7789

This is a large vintage panoramic tapestry. A Continental, needlepoint decorative panel with gilt frame, dating to the early 20th century, circa 1930.

- Of wide proportion with charming scenery and interest
- Displays a desirable aged patina throughout
- Generously sized needlepoint tapestry with copious detail
- Presented within a bright gilt finished frame, ready to mount
- Classical Continental riding scene with 18th century gentry walking their hounds
- In the distance, a small town and windmill can be observed
- Foliage resplendent in an attractive array of mellow hues

This is a delightful vintage panoramic tapestry, with an idyllic classical scene. Delivered polished and ready to hang.

Search [London Fine for #18.7789](#), or scan the QR code for more photos and details

### DIMENSIONS

Max Width: 199.5cm (78.5")

Max Depth: 2.5cm (1")

Max Height: 106.5cm (42")

Panel Width: 189.5cm (74.5")

Panel Height: 96.5cm (38")

