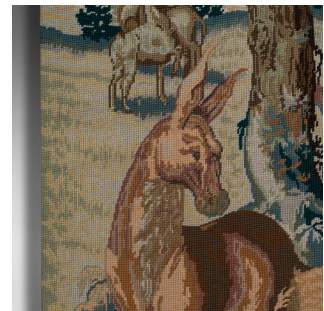


Large Antique Tapestry Panel, Continental, Needlepoint, Square Frieze, Victorian



DESCRIPTION

Our Stock # 18.7800

This is a large antique tapestry panel. A Continental, heavy needlepoint square frieze, dating to the late Victorian period, circa 1900.

- Classic tapestry with superb hand-woven detail
- Generous near-square size of 130cm x 133.5cm (51.25" x 52.5")
- Displaying a desirable aged patina with minimal wear or sun fade
- Verdant colour palette with fascinating forest motif
- Features an abundance of wild animals within a forest glade
- Two hunters to the middle ground take a rest beside a tree stump
- Quality foliage detail and presenting a quality sense of depth
- Twelve inset hanging loops to rear for ease of mounting

This is an attractive antique decorative tapestry, with great detail and colour. Of generous size, the tapestry can be easily mounted. Delivered ready to enjoy.

Search [London Fine for #18.7800](#) , or scan the QR code for more photos and details

DIMENSIONS

Max Width: 130cm (51.25")

Max Depth: 0.5cm (.25")

Max Height: 133.5cm (52.5")

LIST PRICE

£1,275.00

