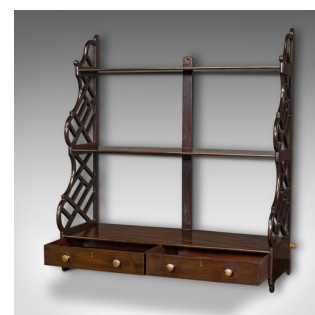


Antique Mounted Whatnot, English, Wall Shelf, Chinoiserie, Victorian, Circa 1900



**DESCRIPTION**

Our Stock # 18.8005

This is an antique mounted whatnot. An English, mahogany wall shelf with Chinoiserie taste, dating to the late Victorian period, circa 1900.

- Attractive wall mounted display shelves with distinctive finish
- Displays a desirable aged patina and in good order throughout
- Select stocks show fine grain interest and deep russet hues
- Striking pierced sides redolent of the Chinoiserie influence favoured by E.W. Godwin
- Arranged as a pair of shelves over a deep drawer base
- Framed by the geometric shaped fretwork with a supporting spar to centre
- Pair of useful drawers dressed with small brass pulls and brass lined locks – key absent
- Free standing upon shaped feet, with a trio of mounting holes for wall hanging if desired

This is a fascinating antique mounted whatnot, with striking Chinoiserie overtones. Delivered waxed, polished and ready to mount.

Search [London Fine for #18.8005](#) , or scan the QR code for more photos and details

**DIMENSIONS**

- Max Width: 61.5cm (24.25")
- Max Depth: 25.5cm (10")
- Max Height: 75.5cm (29.75")
- Shelf Width: 65cm (25.5")
- Shelf Depth: 23cm (9")
- Upper Shelf Height: 24.5cm (9.75")
- Lower Shelf Height: 25.5cm (10")

**LIST PRICE**

£1,275.00

