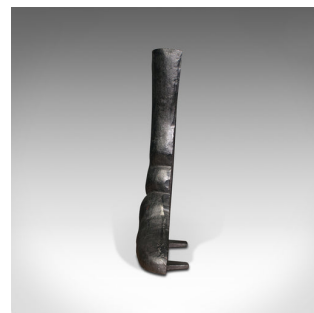


## Antique Decorative Door Stop, English, Cast Iron, Boot Prop, Victorian, C.1850



## DESCRIPTION

Our Stock # 18.8181

This is an antique decorative door stop. An English, cast iron boot prop, dating to the early Victorian period, circa 1850.

- Fascinating decorative form, ideal for the home or retail environment
- Displays a desirable aged patina and in good order
- Cast iron presented with a good, consistent graphite finish throughout
- Crafted with a leathered appearance, replete with a distinctive boot arch to the sole
- Hollow to reverse with a pair of shallow braces to rest beneath the door

This is a distinct and charming antique decorative door stop, in the form of a gentleman's leather boot. Delivered polished and ready to display.

Search [London Fine for #18.8181](#), or scan the QR code for more photos and details

## DIMENSIONS

Max Width: 27.5cm (10.75")

Max Depth: 9cm (3.5")

Max Height: 36cm (14.25")

