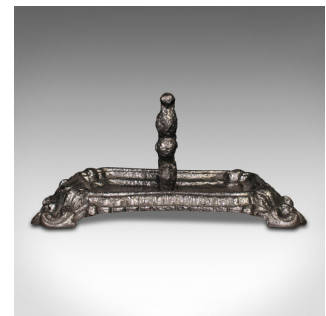


Antique Decorative Boot Scraper, English, Cast Iron, Door Scrape, Regency, 1820



DESCRIPTION

Our Stock # 18.8259

This is an antique decorative boot scraper. An English, cast iron door entrance scrape, dating to the Regency period, circa 1820.

- Pleasingly ornate, Regency period scrape
- Displays a desirable aged patina and in good order
- Cast iron in good order with a consistent graphite finish throughout
- Reassuringly robust with a weight of 5.75kg (12.67 lb)
- Suitable for use within the entrance hall or besides the front door
- Boot scrape presented between a pair of decorative supports
- Offering a useful scrape width of 12cm (4.75"), the scrolled ends doubling as a boot pull
 - Flared edge to dish with attractive continuous pattern, raised upon a quartet of scrolled feet

This is an appealing antique boot scrape. Attractive, practical and as useful today as it was 200 years ago. Delivered polished and ready for the entrance way.

Search [London Fine for #18.8259](#), or scan the QR code for more photos and details

DIMENSIONS

Max Width: 30.5cm (12")

Max Depth: 34.5cm (13.5")

Max Height: 16.5cm (6.5")

