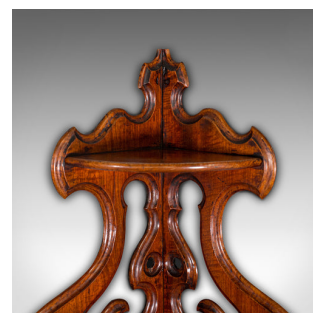
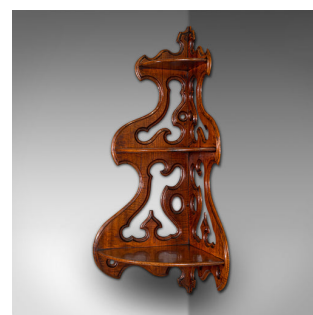
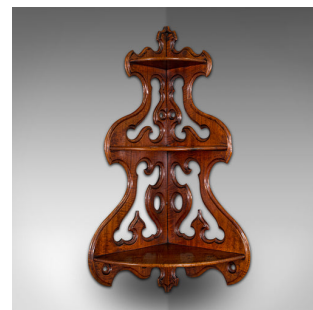
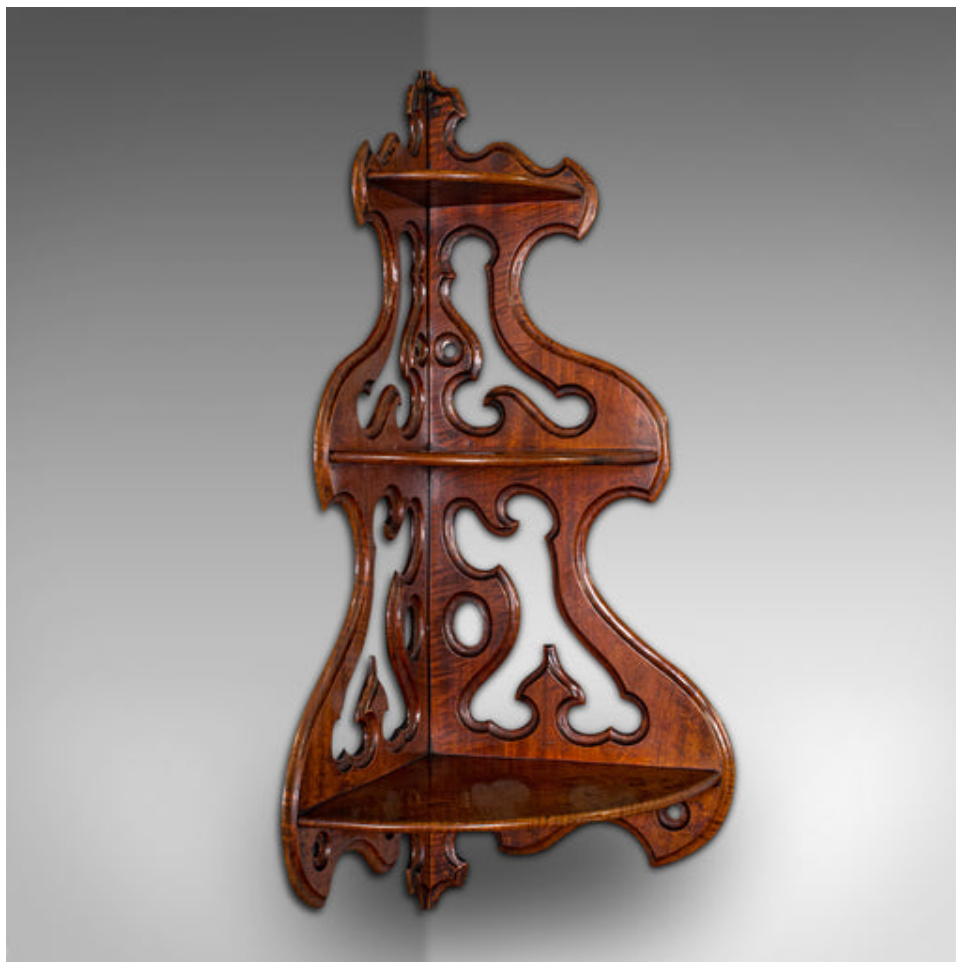


Antique 3-Tier Hanging Whatnot, English, Walnut, Corner Wall Shelf, Victorian



DESCRIPTION

Our Stock # 18.8242

This is an antique three-tier hanging whatnot. An English, walnut corner wall shelf or candle bracket, dating to the early Victorian period, circa 1850.

- Distinctive wall mounted corner whatnot with striking form
- Displays a desirable aged patina throughout
- Select walnut presents fine grain interest and deep caramel hues
- Graced with a quality wax polish finish
- Arranged as three shelves - ideal for small ornaments or tea lights
- Inter-directional form for mounting either way as desired
- Eye-catching pierced stocks with sinuous, tiered edges
- Two pairs of mounting holes aid hanging in the corner of your room

This is a delightful antique three-tier hanging whatnot, with superb carved and pierced form, and of versatile inter-directional craftsmanship. Solid joints and construction, delivered waxed, polished and ready for the home.

Search [London Fine for #18.8242](#), or scan the QR code for more photos and details

DIMENSIONS

Max Width: 43cm (17")
 Max Depth: 29cm (11.5")
 Max Height: 81.5cm (32")
 Upper Shelf Width: 21.5cm (8.5")
 Upper Shelf Depth: 13.5cm (5.25")
 Middle Shelf Width: 31cm (12.25")
 Middle Shelf Depth: 20.5cm (8")
 Middle Shelf Height: 23.5cm (9.25")
 Lower Shelf Width: 38.5cm (15.25")
 Lower Shelf Depth: 26cm (10.25")
 Lower Shelf Height: 27.5cm (10.75")

LIST PRICE

£895.00

