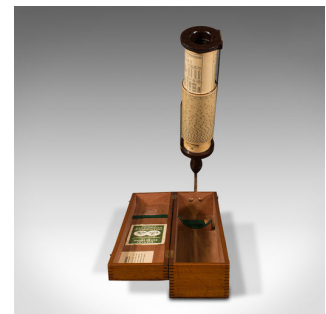


Vintage Fuller's Calculator, English, Scientific Instrument, Stanley of London



DESCRIPTION

Our Stock # 18.8256

This is a vintage Fuller's Calculator. An English, Bakelite and mahogany cased scientific instrument by Stanley of London, dating to the mid 20th century, circa 1950.

- Quality mathematical instrument of superb interest
- Displays a desirable aged patina and in good order throughout
- Brass, paper cylinders and Bakelite handle show appealing colour
- Presented within a mahogany box, showing fine grain interest
- Brass arm sits within a socket to the edge of the case, upon which the calculator is mounted
- Rotating the cylinders provides mathematical equations of reassuring reliability
- Engraved to pointer with 'Fuller's Calculator - Made in England'
- Stanley maker's mark appears upon the handle and a period maker's label within the case

This is a striking example of a vintage Fuller's Calculator, providing complex, yet reliable mathematical answers. As good today as it was 70 years ago, or gracing a desktop. Delivered waxed, polished and ready to fascinate.

DIMENSIONS

Max Width: 47cm (18.5")
 Max Depth: 11.5cm (4.5")
 Max Height: 11cm (4.25")
 In Use Width: 47cm (18.5")
 In Use Depth: 23.5cm (9.25")
 In Use Height: 52cm (20.5")



Search [London Fine for #18.8256](#), or scan the QR code for more photos and details

+44 (0) 207 1833 511

London Fine Ltd
 The Antique Village
 The Old Whiteways Cider Factory
 Hele, Devon, EX5 4PW

sales@londonfine.co.uk
 E. & O. E.