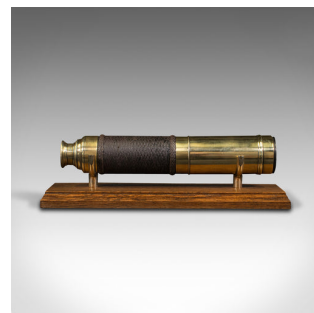


Antique Telescope, English, Brass, 3-Draw Terrestrial Refractor, Victorian, 1880



DESCRIPTION

Our Stock # 18.8254

This is an antique telescope. An English, brass 3-draw terrestrial or astronomical refractor, dating to the Victorian period, circa 1880.

Perfect for bird watching, landscape appreciation, wildlife, or maritime observation. Equally suitable for observing the night sky.

- Appealing finish, drawing to a generous length from a compact body
- Displays a desirable aged patina throughout, each tube drawing with a pleasingly firm action
- Braided canvas dressing to primary barrel both tactile and distinctive
- Bright golden tones to the polished brass draw tubes
- Presents clear optical performance, with a 38mm (1.5") primary objective lens
- Deep, sliding sun shade for protection on bright days
- Flared eye cup benefits from a swivel type dust cover
- Supplied with a London Fine oak and brass 'Captain's Stand' for display

This is a fascinating antique telescope, with quality late Victorian craftsmanship. Delivered polished and ready for use or display.

DIMENSIONS

Closed Length: 26.5cm (10.5")

Fully Drawn Length: 84.5cm (33.25")

Objective Diameter: 38mm (1.5")



Search [London Fine](#) for #18.8254, or scan the QR code for more photos and details

+44 (0) 207 1833 511

London Fine Ltd
The Antique Village
The Old Whiteways Cider Factory
Hele, Devon, EX5 4PW

sales@londonfine.co.uk
E. & O. E.