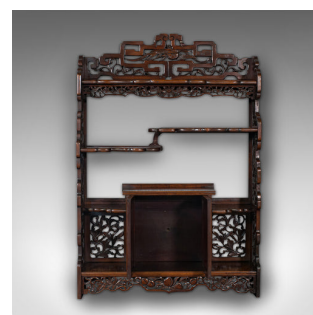
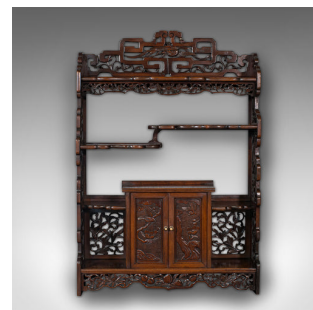


Antique Decorative Whatnot, Chinese, Hanging Wall Shelf, Victorian, Circa 1900



DESCRIPTION

Our Stock # 18.8217

This is an antique decorative whatnot. A Chinese, mahogany hanging wall shelf with asymmetric form, dating to the late Victorian period, circa 1900.

- A treat of fretwork, unusual Kazaridana form and carved detail
- Displays a desirable aged patina throughout
- Select stocks present dark russet hues and fine grain interest
- Enthusiastically pierced fretwork a testament to the craftsmanship
- Arranged over four tiers, the central pair cascade into a split level
- Shaped back rest decorated with a delightful carved bird
- Small cabinet enhanced with relief carved panels, showing birds upon a branch
- Suitable for wall hanging or as a free-standing display shelf

This is a superb antique decorative whatnot, graced with copious Oriental motif and unusual of form. Solid joints and construction. Delivered waxed, polished and ready for display.

Search [London Fine for #18.8217](#), or scan the QR code for more photos and details

DIMENSIONS

Max Width: 57.5cm (22.75")

Max Depth: 16cm (6.25")

Max Height: 85cm (33.5")

