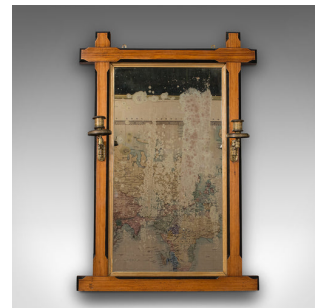


Antique Girandole Pier Mirror, English, Pitch Pine, Aesthetic Period, Victorian



DESCRIPTION

Our Stock # 18.8296

This is an antique girandole pier mirror. An English, pitch pine mirror with candle holders in Aesthetic period taste, dating to the late Victorian era, circa 1880.

- Bold frame with Ecclesiastical taste and character foxing
- Displays a desirable aged patina throughout
- Pitch pine frame presents fine grain interest
- Caramel hues accentuated with ebonised channels to the frame edge
- Original mirror plate shows heavy, period foxing
- Adjustable, double fold candle brackets with decorated brass cups bearing a Greek key pattern
- Offers a useful candle nozzle size of 20mm (0.75")
- Dressed with a trio of brass mounting loops for ease of hanging

This is a fascinating antique girandole pier mirror, graced with Aesthetic period and ecclesiastical overtones. Resplendent with character, the original mirror plate adds to the whole. Delivered waxed, polished and ready to display.

Search [London Fine for #18.8296](#) , or scan the QR code for more photos and details

DIMENSIONS

- Max Width: 57cm (22.5")
- Max Depth: 18cm (7")
- Max Height: 84cm (33")
- Mirror Plate Width: 34.5cm (13.5")
- Mirror Plate Height: 65cm (25.5")

