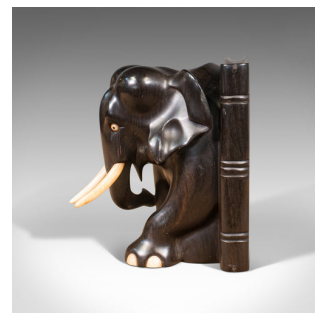
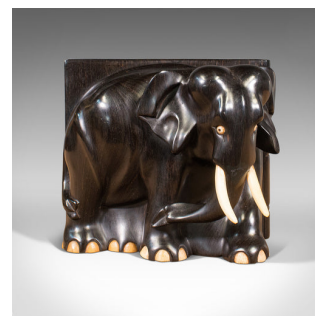
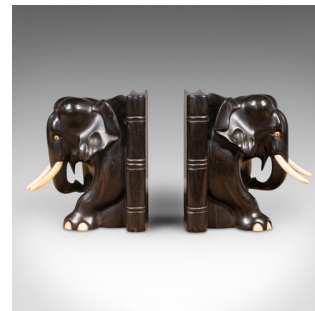


Pair Of Antique Elephant Bookends, English, Ebony, Carved, Book Rest, Victorian



DESCRIPTION

Our Stock # 18.8273

This is a pair of antique elephant bookends. An English, ebony and bone carved animal book rest, dating to the late Victorian period, circa 1890.

- Superb character, offering a real treat for the book shelf
- Displaying a desirable aged patina and in good order
- Deftly carved ebony presents deep hues and grain interest
- Shaped bone tusks and toe detail in contrasting warm cream
- Pleasingly heavy, with a weight of 1.71kg and 1.66kg respectively (3.76 lb & 3.65 lb)

This is a dashing pair of antique bookends, wonderfully crafted into charming elephant form. Delightful for the avid reader, upon a desktop or shelf. Delivered waxed, polished and ready to enjoy.

Search [London Fine for #18.8273](#), or scan the QR code for more photos and details

DIMENSIONS

Max Width: 13cm (5")
Max Depth: 16cm (6.25")
Max Height: 14cm (5.5")

