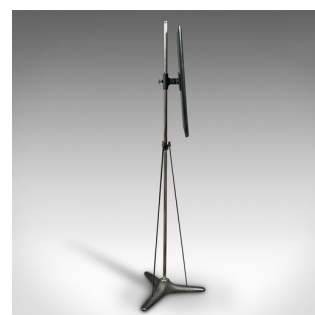
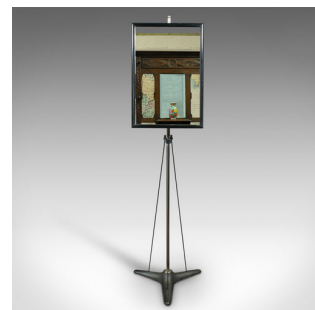


Vintage Optician's Mirror, German, Adjustable Vanity, Bathroom, Industrial, 1960



DESCRIPTION

Our Stock # 18.8287

This is a vintage optician's mirror. A German, cast iron and adjustable vanity or bathroom mirror with industrial taste, dating to the mid 20th century, circa 1960.

- It's all about that base - striking industrial chic for any room or setting
- Displays a desirable aged patina and in very good order
- Ebonised pine frame and cast iron engineered mounts
- Quality mirror plate with minimal foxing and clear reflection
- Adjustable for height, with tilt and rotate function
- Striking tensions struts create a distinctive visual motif
- Standing upon a triform base with gently rounded form
- Weighs an impressive 15.4kg (33.95 lb) - a testament to the German industrial quality

This is a superb vintage opticians mirror, with strong industrial overtones. Set upon a truly distinctive base, this mirror would grace any institution, or sit invitingly in the corner of the bathroom. Solid joints and construction. Delivered polished and ready to gaze upon.

DIMENSIONS

Max Width: 43cm (17")
 Max Depth: 37cm (14.5")
 Min Height: 158cm (62.25")
 Max Raised Height: 180.5cm (71")
 Mirror Plate Width: 34.5cm (13.5")
 Mirror Plate Height: 52cm (20.5")

LIST PRICE

£2,750.00



Search [London Fine for #18.8287](#), or scan the QR code for more photos and details

+44 (0) 207 1833 511

London Fine Ltd
 The Antique Village
 The Old Whiteways Cider Factory
 Hele, Devon, EX5 4PW

sales@londonfine.co.uk
 E. & O. E.