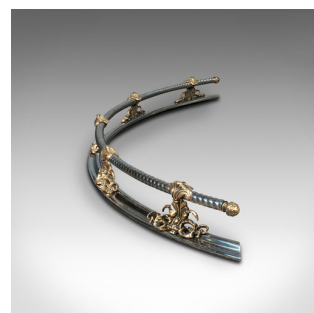
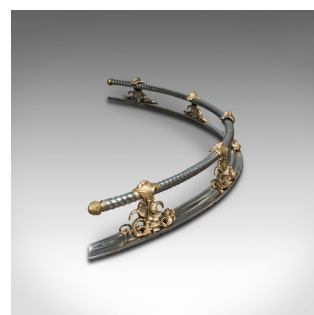


Antique Curved Fire Fender, English Steel, Brass, Fireside Kerb, Victorian, 1850



DESCRIPTION

Our Stock # 18.8299

This is an antique arched fire fender. An English, polished steel and brass fireside kerb, dating to the early Victorian period, circa 1850.

- Graced with enduring elegance - a superb addition to the fireplace
- Displays a desirable aged patina and in very good order
- Gently polished steel radiates a striking, bright tonality
- Ornate brass plume of feather mounts contrast beautifully with golden tones
- Distinctive braided upper rail adorned with brass acorn finials to each end

This is a delightful antique curved fire fender, with a beautifully presented appearance. Set to enhance any fireplace, this is a desirable example of early Victorian fireside chic. Solid joints and construction, delivered polished and ready for the lounge.

Search [London Fine for #18.8299](#) , or scan the QR code for more photos and details

DIMENSIONS

Max Width: 152cm (59.75")
 Max Depth: 38cm (15")
 Max Height: 12cm (4.75")
 Internal Width: 141cm (55.5")
 Internal Depth: 36cm (14.25")

LIST PRICE

£1,625.00

