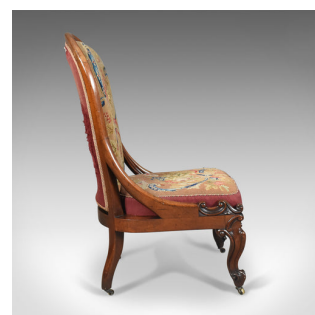


## Antique Nursing Chair, English Walnut, Needlepoint Tapestry Victorian Circa 1840



### DESCRIPTION

Our Stock # 13.0347

This is an antique nursing chair in English walnut and needlepoint tapestry dating to the early Victorian period, circa 1840.

- Superior quality and solid walnut frame displaying good colour
- Well proportioned with desirable aged patina
- Traditionally stuffed offering a comfortable seat
- Raised on carved cabriole legs decorated with 'C' scrolls and reeding
- Elaborate scrolled toes over solid brass castors
- Sinuous edge detailing runs seamlessly into seat rail decoration
- Swept and shaped rear legs
- Carved brackets run back into dished backrest with humped cresting rail
- The drop-in seat pad and backrest covered in a needlepoint tapestry
- Florally decorated in muted earthy tones
- Shabby appeal as is or would welcome recovering

Search [London Fine for #13.0347](#) , or scan the QR code for more photos and details

### DIMENSIONS

Max Width: 57cm (22.5")  
 Max Depth: 61cm (24")  
 Max Height: 104cm (41")  
 Seat Width: 48cm (19")  
 Seat Depth: 48cm (19")  
 Seat Height: 43cm (17")

