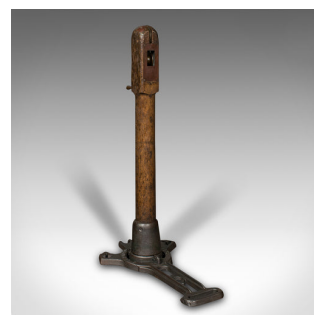


Pair Of Antique Lawn Tennis Posts, English, Net Pole Mount, Slazenger, Edwardian



DESCRIPTION

Our Stock # 18.8284

This is a pair of antique lawn tennis posts. An English, cast iron 'Stadium' net pole mount by Slazenger, dating to the Edwardian period, circa 1910.

- Delightful, high quality net posts - bring a dash of Wimbledon to the garden or court
- Displays a desirable aged patina and in good order
- Stout cast iron mounts with distinctive form and good, consistent graphite finish
- Stained pine posts dressed with brass caps, engraved with Slazenger
- Conforms with the net height regulation of 3'6" at the posts
- Engineered bronze winding mechanism to left-hand post with registered mark reads 'The Eezewynder - Rd 629225'

• Mounts cast with relief mark for Slazengers' Ltd Stadium Pole

• 'T' shape cutouts for staking into soft ground

• Posts lock into the attractive mounts with an angled socket

• Wonderfully robust, with each post and base set weighing an impressive 27kg (59.5 lb)

Search [London Fine for #18.8284](#) , or scan the QR code for more photos and details

DIMENSIONS

Max Width: 41cm (16.25")

Max Depth: 69cm (27.25")

Max Height: 118cm (46.5")

LIST PRICE

£2,450.00

