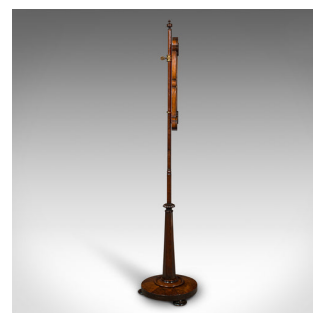


Antique Fireside Pole Screen, English, Needlepoint Tapestry, Adjustable, Regency



DESCRIPTION

Our Stock # 18.8309

This is an antique fireside pole screen. An English, rosewood and needlepoint tapestry adjustable shield, dating to the Regency period, circa 1820.

- Superb Regency craftsmanship, ideal decoration for the fireside
- Displays a desirable aged patina and in very good order
- Select stocks show fine grain interest and rich russet hues
- Quality needlepoint presented behind a clear, bright glass plate
- Pole adorned with a small carved finial
- Distinctive frame, pinched to middle, with quality scroll shell carvings to corners
- Panel embroidered with a foliate bouquet, presenting red and blue petals
- Dressed to rear with bright crimson silk cotton, accentuated with brocade trim
- Adjustable screen height within a range of 68.5cm (27")
- Raised upon a slender pole, with gadrooned bulb carving
- Gently tapered circular base shows superb figuring

Search [London Fine for #18.8309](#), or scan the QR code for more photos and details

DIMENSIONS

Max Width: 44.5cm (17.5")
 Max Depth: 31cm (12.25")
 Max Height: 140cm (55")
 Panel Width: 38.5cm (15.25")
 Panel Height: 36.5cm (14.25")

LIST PRICE

£1,795.00

