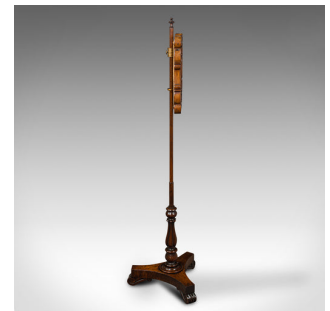


Antique Adjustable Pole Screen, English, Fireside Shield, Regency, Circa 1820



DESCRIPTION

Our Stock # 18.8307

This is an antique adjustable pole screen. An English, rosewood and needlepoint fireside shield, dating to the Regency period, circa 1820.

- Delightful Regency period craftsmanship for the fireside
- Displaying a desirable aged patina and in very good order
- Select stocks show fine grain interest and deep russet hues
- Charming needlepoint presented behind a clear, bright glass plate
- Slender pole topped with a small carved finial
- Accentuated square frame with dashing shell carvings to corners
- Panel embroidered with a bird of paradise realised in brushed fabric
- Dressed to rear gold with brocade trim
- Adjustable screen offering a range of 77cm (30.25")
- Raised upon a bold, gadrooned baluster column
- Striking tri-point base shows superb figuring

Search [London Fine for #18.8307](#) , or scan the QR code for more photos and details

DIMENSIONS

Max Width: 42cm (16.5")
Max Depth: 35cm (13.75")
Max Height: 133cm (52.25")
Panel Width: 32cm (12.5")
Panel Depth: 27.5cm (10.75")

LIST PRICE

£895.00

