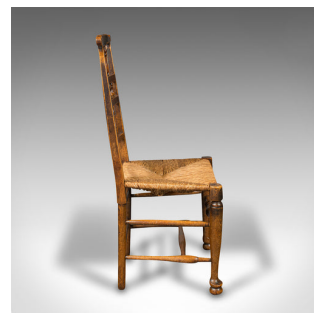


Pair Of Antique Spindleback Rush Chairs, English, Hall, Lancashire, Victorian



DESCRIPTION

Our Stock # 18.8340

This is a pair of antique spindleback rush country chairs. An English, oak hall or dining seat in the Lancashire taste, dating to the early Victorian period, circa 1850.

- Delightful seventeen-spindle back with appealing deep rush seats
- Displays a desirable aged patina in very good order
- Light oak stocks show fine grain interest and warm caramel hues
- Superb, traditional rush seat cover shows light biscuit hues
- Distinctive ears adorn the shaped top rail
- Arranged five-seven-five, the spindles deftly turned to pleasing effect
- Bold knees sit above gently tapering front legs, set on ball and pad feet
- Circular feet to rear, united throughout by turned stretchers

This is a classically attractive pair of antique spindleback rush chairs, well suited to making a fine addition to the larger entrance hall or table. Solid joints and construction, delivered waxed, polished and ready for the home.

Search [London Fine for #18.8340](#), or scan the QR code for more photos and details

DIMENSIONS

Max Width: 54cm (21.25")
Max Depth: 49cm (19.25")
Max Height: 101.5cm (40")
Seat Width: 49cm (19.25")
Seat Depth: 39cm (15.25")
Seat Height: 44.5cm (17.5")

LIST PRICE

£1,795.00

