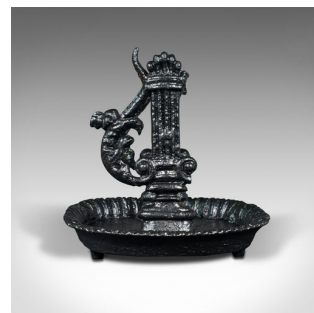
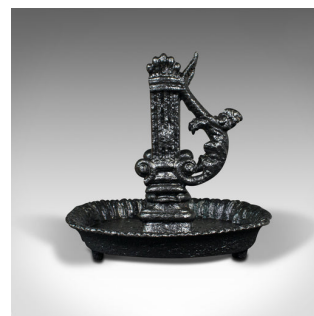


Antique Boot Scraper and Pull, English, Cast Iron Entrance Scrape, Late Georgian



DESCRIPTION

Our Stock # 18.8353

This is an antique boot scraper and pull. An English, cast iron door entrance scrape, dating to the late Georgian period, circa 1800.

- Of generous proportion and ornate appearance
- Displays a desirable aged patina and in good order
- Cast iron presented with a deep black painted finish throughout
- Reassuring weight of 8.83kg (19.4 lb)
- Suitable for use within the entrance hall or besides the front door
- 19cm (7.5") wide scrape situated between a pair of decorative supports
- Serpentine stanchions add a visual flourish and useful as a boot pull
- Flared edge to dish with attractive reeded pattern, raised upon a quartet bun feet

This is an attractive antique boot scrape with pull. Graceful, practical and as useful today as it was over 200 years ago in the late Georgian period. Delivered polished and ready for the entrance way.

Search [London Fine for #18.8353](#), or scan the QR code for more photos and details

DIMENSIONS

Max Width: 37cm (14.5")

Max Depth: 28cm (11")

Max Height: 16cm (6.25")

