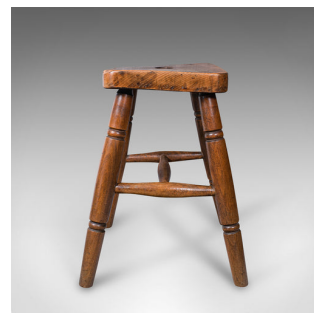
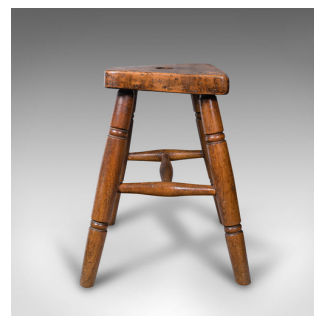


Vintage Laboratory Stool, English, Elm, Country House, Mid 20th Century, C.1940



DESCRIPTION

Our Stock # 18.8387

This is a vintage laboratory stool. An English, elm country house seat, dating to the mid 20th century, circa 1940.

- Charmingly presented stool with great colour and figuring
- Displays a desirable aged patina throughout
- Select elm shows fine grain interest and rich caramel hues
- Carry handle carved into the wany seat squab
- Raised upon a quartet of turned legs, united by a H-stretcher
- Engraved for Gomm Bros, High Wycombe, 1940

This is an appealing vintage laboratory stool, with fascinating aged form and attractive colour. A comfortable perch for the kitchen or shed environment. Solid joints and construction, delivered waxed, polished and ready for the home.

Search [London Fine for #18.8387](#) , or scan the QR code for more photos and details

DIMENSIONS

Max Width: 39cm (15.25")

Max Depth: 36.5cm (14.25")

Max Height: 47cm (18.5")

