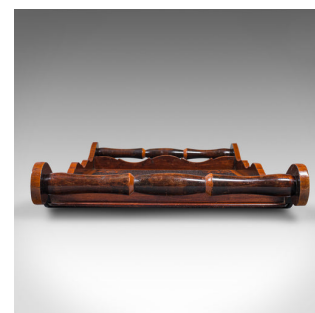
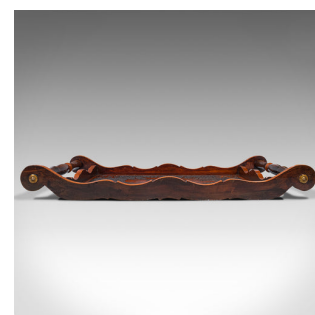


Antique Pokerwork Serving Tray, English, Afternoon Tea, Art Nouveau, Victorian



DESCRIPTION

Our Stock # 18.8320

This is an antique pokerwork serving tray. An English, beech afternoon tea tray with Art Nouveau taste, dating to the late Victorian period, circa 1900.

- Serpentine form and wonderful craftsmanship to this serving tray
- Displays a desirable aged patina and in good order
- Select beech shows fine grain interest and rich caramel hues
- Superb pokerwork adorns the tray, with distinctive wildflower harvest motif
- Sinuous wavy edge terminates in brass handle caps
- Rolled, turned handles grace each end, with tactile finish

This is an attractive antique pokerwork serving tray, as decorative as it is useful. Art Nouveau overtones and exceptional craftsmanship present a wonderful example for the lounge or dining room. Solid joints and construction, delivered waxed, polished and ready for the home.

Search [London Fine for #18.8320](#) , or scan the QR code for more photos and details

DIMENSIONS

- Max Width: 62cm (24.5")
- Max Depth: 35.5cm (14")
- Max Height: 7.5cm (3")
- Tray Interior Width: 44cm (17.25")
- Tray Interior Depth: 33cm (13")
- Tray Interior Height: 3.5cm (1.5")

