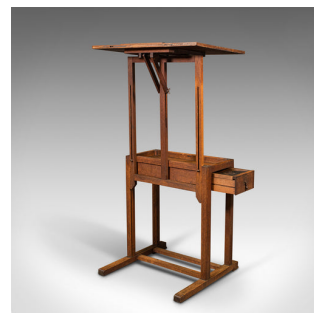
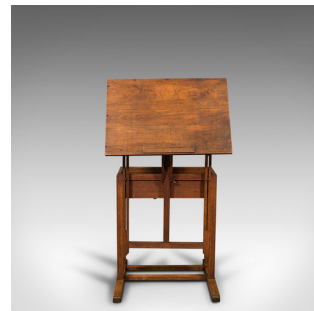


Antique Artist's Easel, English, Oak, Adjustable, Rest, Lectern, Edwardian, 1910



DESCRIPTION

Our Stock # 18.8412

This is an antique artist's easel. An English, oak adjustable draughtsman's rest or lectern, dating to the Edwardian period, circa 1910.

- Fascinating Edwardian easel for the artist or orator
- Displaying a desirable aged patina and in good order
- Select oak shows fine grain interest and deep caramel hues
- Offering adjustment for height, angle and orientation
- Generously sized top with raised document rest - 71cm x 45cm (28" x 17.75")
- Drawer to side, dressed with a brass drop pendant handle over foliate backplate
- Opening the drawer reveals a useful pen tray and lower compartment
- Secondary compartment set into the support stand
- Standing reassuringly upon square section trestle feet
- Maker's plaque to stand reads 'Manufactured by J.Bryce Smith Ltd, London'
- Writing surface engraved 'Winsor & Newton Ltd, Made in England'

Search [London Fine for #18.8412](#) , or scan the QR code for more photos and details

DIMENSIONS

Max Width: 71cm (28")

Max Depth: 60.5cm (23.75")

With Rest set to Horizontal:

Lowest Height: 90.5cm (35.75")

Raised Height: 135cm (53.25")

