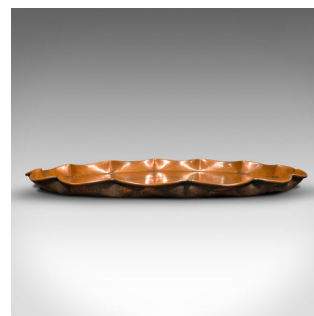


Large Antique Cornish Serving Tray, English, Copper, Art Nouveau, Circa 1920



DESCRIPTION

Our Stock # 18.8354

This is a large antique Cornish serving tray. An English, copper tray with Art Nouveau taste, dating to the early 20th century, circa 1920.

- Charming tray with delightful foliate forms and Art Nouveau taste
- Displaying a desirable aged patina throughout
- Hand-beaten and rolled copper shows pleasing amber hues
 - Decorated with a concentric foliate medallion with large flowing detail to the circumference
- Pokerwork ground pattern adds an eye-catching mottled finish
- Accentuated with a dashing petal form edge, with rolled lip
- Engraved 'Hand Made' to the fully decorated reverse

This is a striking antique Cornish serving tray, with wonderful handmade forms and detail. Delivered polished and ready to serve.

Search [London Fine for #18.8354](#), or scan the QR code for more photos and details

DIMENSIONS

Max Width: 58cm (22.75")

Max Depth: 58cm (22.75")

Max Height: 3.5cm (1.5")

