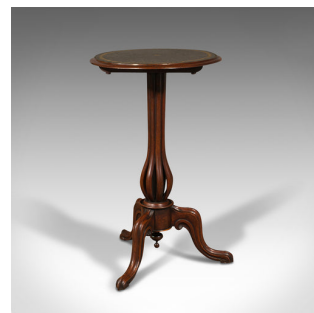
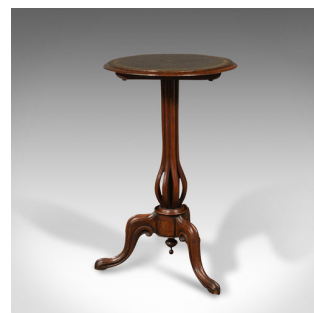
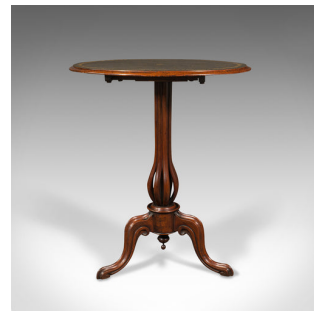


## Antique Tilt Top Wine Table, English, Walnut, Side, Occasional, Lamp, Victorian



### DESCRIPTION

Our Stock # 18.8451

This is an oval antique tilt-top wine table. An English, walnut and leather side or occasional lamp table, dating to the early Victorian period, circa 1840.

- Charmingly petite table with striking base and finish
- Displays a desirable aged patina throughout
- Select walnut shows fine grain interest and rich caramel hues
- Inset leather skiver accentuated with central motif, gold tooling and embossed detail
- Tilting oval top with a gently rolled edge, dressed with iron release clasp to reverse
- Arcaded bulb support column a truly distinctive example of quality craftsmanship
- Trio of cabriole legs with broad knees, terminating with scrolled toes
- Attractive drop pendant finial situated within the centre

This is a darling antique tilt-top wine table, graced with a beautiful finish and superb form. Solid joints and construction, delivered waxed, polished and ready for the home.

Search [London Fine for #18.8451](#) , or scan the QR code for more photos and details

### DIMENSIONS

Max Width: 60.5cm (23.75")  
 Max Depth: 43cm (17")  
 Max Height: 70.5cm (27.75")  
 Tilted Width: 43cm (17")  
 Tilted Depth: 46.5cm (18.25")  
 Tilted Height: 106.5cm (42")

### LIST PRICE

£1,395.00

