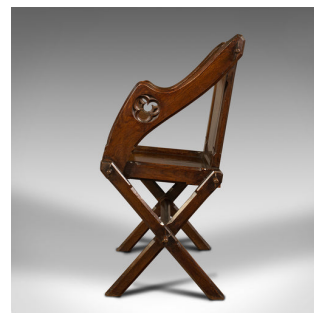


Antique Glastonbury Chair, English, Pitch Pine Armchair, Gothic Taste, Victorian



DESCRIPTION

Our Stock # 18.8465

This is an antique Glastonbury chair. An English, pitch pine decorative armchair with Gothic overtones, dating to the Victorian period, circa 1880.

- Delightful example of the fabled Glastonbury chair, with superb form and detail
- Displaying a desirable aged patina and good order throughout
- Quality pitch pine shows fine grain interest and deep caramel hues
- Bold, serpentine stocks and robust cleated peg joints
- Square back rest accentuated with a field panel splat
- Pierced fretwork button detail to the top rail above a shaped border carving
- Broad, striking arms finished with canted corners, and trefoil motif
- Flat seat squab recessed gently inside the front apron at a comfortable height of 47cm (18.5")
- Standing upon a quartet of square section legs, in tremendous X-form

This is a superior antique Glastonbury chair with unabashed Gothic revival overtones and quality stocks. Finished to a flourish throughout and sure to enhance any room. Solid joints and construction, delivered waxed, polished and ready for the home.

DIMENSIONS

Max Width: 67cm (26.5")
 Max Depth: 48.5cm (19")
 Max Height: 90.5cm (35.75")
 Seat Width: 42cm (16.5")
 Seat Depth: 37.5cm (14.75")
 Seat Height: 47cm (18.5")

LIST PRICE

£985.00



Search [London Fine for #18.8465](#), or scan the QR code for more photos and details

+44 (0) 207 1833 511

London Fine Ltd
 The Antique Village
 The Old Whiteways Cider Factory
 Hele, Devon, EX5 4PW

sales@londonfine.co.uk
 E. & O. E.