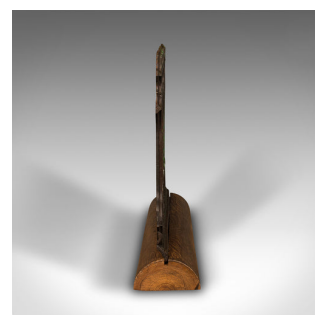


Antique Architectural Gothic Cast Iron Panel on Stand, English, Victorian, 1880



DESCRIPTION

Our Stock # 18.8476

This is an antique architectural panel. An English, cast iron and pitch pine fire guard, garden display or divider, dating to the Victorian period, circa 1880.

- Captivating Victorian iron and pitch pine culminate in this unusual architectural piece
- Displays a desirable aged patina throughout
- Cast iron fence with original paint shows appealing weathering
- Showing delightful traces of original paintwork beneath the cleaned and waxed surface
- Mounted within a demi-lune pitch pine base - can be removed if required
- Presents superb gothic revival overtones with quarterfoil detail
- Wonderfully versatile as a dog guard, decorative divider or fire guard

This is a delightful antique architectural panel, with superb cast iron and pitch pine. A rare and unusual opportunity for the home or garden. Solid joints and construction, delivered waxed, polished and ready to display.

Search [London Fine for #18.8476](#) , or scan the QR code for more photos and details

DIMENSIONS

Max Width: 94cm (37")
 Max Depth: 24.5cm (9.75")
 Max Height: 85cm (33.5")

