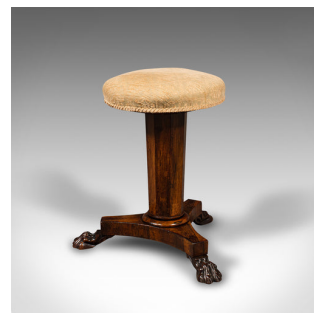
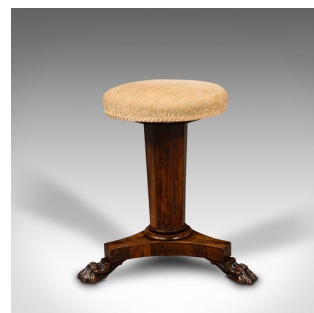


## Antique Music Stool, English, Adjustable, Piano, Recital, Regency, Circa 1820



### DESCRIPTION

Our Stock # 18.8408

This is an antique music stool. An English, rosewood adjustable piano recital stool, dating to the Regency period, circa 1820.

- Attractive music stool with adjustable height and fascinating form
- Displays a desirable aged patina and in very good order
- Select stocks show fine grain interest and deep russet hues
- Dressed with a quality, tactile upholstery in tasteful light golden hues
  - Diamond foliate pattern with a matching brocade trim to the edge with cushion diameter of 34cm (13.5")
- Superb octagonal stem with wooden screw thread, adjusts by 10cm (4")
- Dashing triform base with gently chamfered circular collar
- Standing upon a trio of delightful hairy paw feet

This is a delightful antique music stool with a distinguished octagonal stem and excellent paw feet. Solid joints and construction, delivered waxed, polished and ready to enjoy.

Search [London Fine for #18.8408](#), or scan the QR code for more photos and details

### DIMENSIONS

Max Width: 45cm (17.75")  
 Max Depth: 44cm (17.25")  
 Lowered Height: 50.5cm (20")  
 Max Raised Height: 61cm (24")  
 Seat Diameter: 34cm (13.5")

