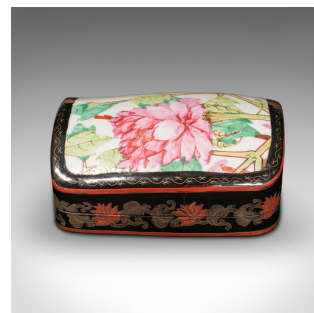
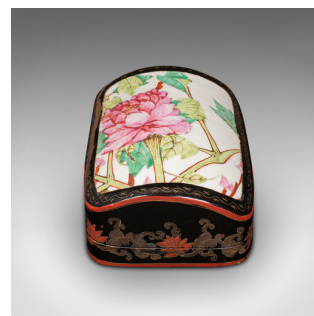
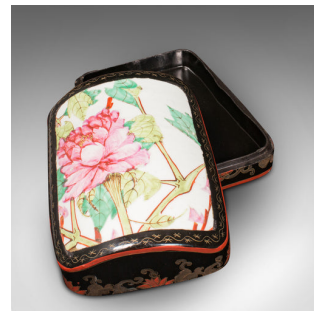


Vintage Dome Top Box, Oriental, Japanned, Trinket, Jewellery Case, Late Art Deco



DESCRIPTION

Our Stock # 18.8361

This is a vintage dome top box. An Oriental, japanned hardwood and enamel trinket or jewellery case, dating to the late Art Deco period, circa 1940.

- Delightfully decorative small box with distinctive form and finish
- Displays a desirable aged patina and in good order
- Dome-top hardwood from benefits from a quality Japanned finish with deep black lacquer
- Adorned with a hand-painted enamel foliate panel, the pink flower against a bright white ground
- Decorated to the edge with a continuous foliate pattern and bands of crimson red

This is a dashing vintage dome top box, well suited to the dressing table or upon a side table. Delivered polished and ready to enjoy.

Search [London Fine for #18.8361](#), or scan the QR code for more photos and details

DIMENSIONS

Max Width: 15.5cm (6")
 Max Depth: 22cm (8.75")
 Max Height: 9.5cm (3.75")
 Interior Width: 13.5cm (5.25")
 Interior Depth: 20cm (7.75")
 Interior Height: 4cm (1.5")

LIST PRICE

£525.00

