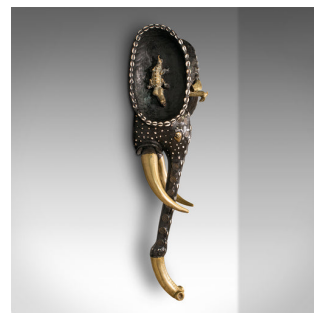
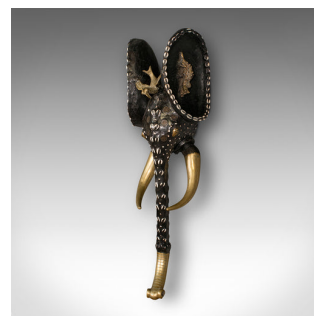
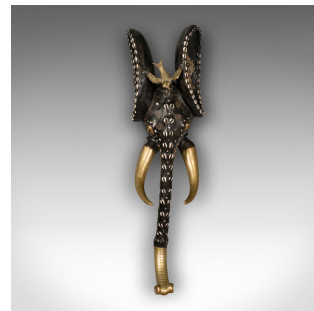
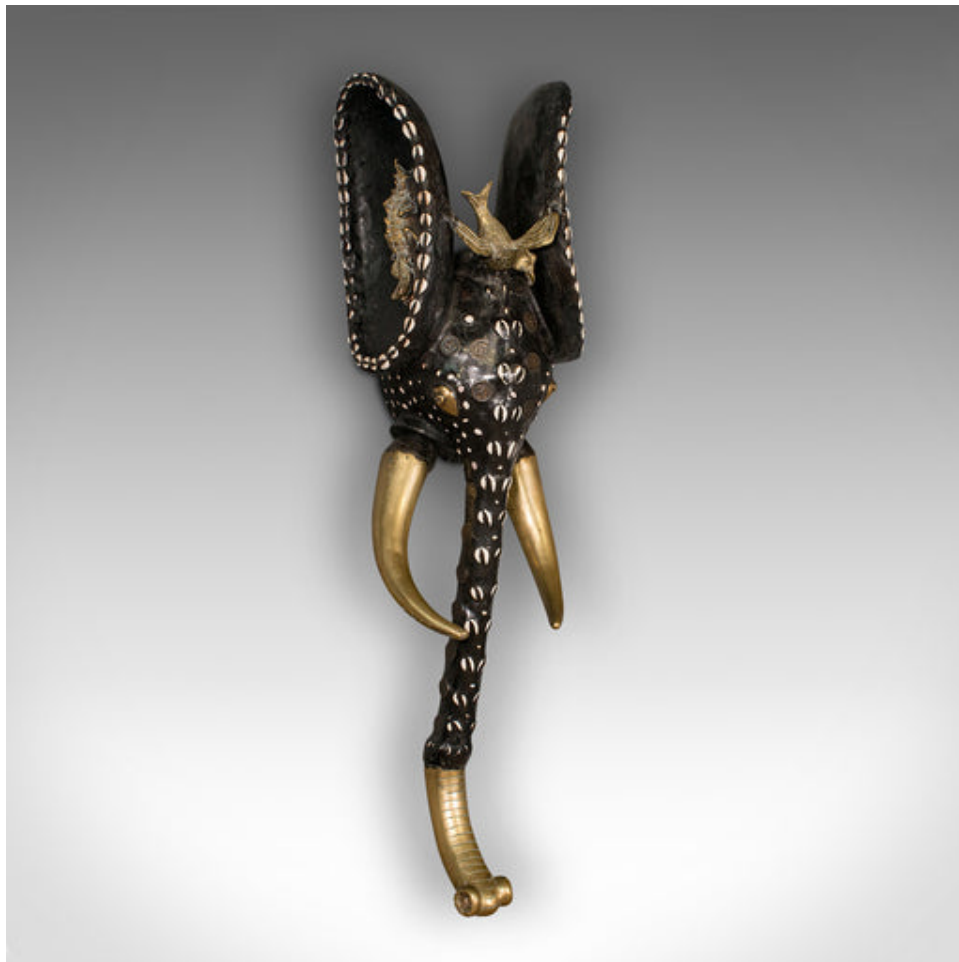


Large Vintage Bamileke Elephant Mask, Cameroon, Decorative, Tribal, Circa 1930



DESCRIPTION

Our Stock # 18.8456

This is a large vintage Bamileke elephant mask. A Cameroonian, ebonised hardwood decorative tribal mask, dating to the early 20th century, circa 1930.

- Exceptional tribal decorative piece, adorned with period coins and shells
- Displays a desirable aged patina and in good original order
- Enthusiastically carved and decorated ebonised hardwood
- Wonderful elephant head form, with copious decorative flourishes
- Brass tusks and trunk end present beaming golden tones
- Gilt metal bird to centre with crocodile figures set within the ears
- French Cameroun 1 Franc coins inset to the head, with wonderfully aged tones
- Contrasting borders of courie shells add further interest
- Small brass mounting loop to reverse for wall hanging

This is a striking vintage Bamileke elephant mask, with large proportion and a delightfully decorative appearance. Superb for collectors of African tribal interest or display. Delivered polished and ready to enjoy.

Search [London Fine for #18.8456](#), or scan the QR code for more photos and details

DIMENSIONS

Max Width: 28.5cm (11.25")

Max Depth: 26cm (10.25")

Max Height: 97cm (38.25")

LIST PRICE

£1,295.00

