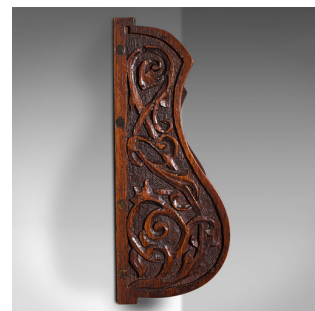
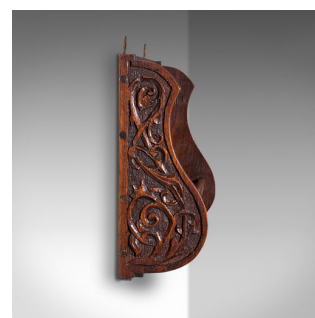


Antique Display Rack, English, Oak, Kitchen, Hallway, Wall Shelf, Victorian



DESCRIPTION

Our Stock # 18.8471

This is an antique display rack. An English, oak kitchen or hallway wall shelf, dating to the Victorian period, circa 1880.

- Tastefully appointed display shelf, with versatile upper rack
- Displaying a desirable aged patina and in good order
- Select oak shows fine grain interest and wisps of medullary rays
- Deep russet hues beam beneath a wax polish finish
- Enthusiastically carved ground with foliate leaf detail
- Monogram to centre - E.H. is relief carved within a shield motif
- Offers an upper rack with a row of ten hooks and small shelf below
- Delightfully shaped ends with serpentine edge and adorned with fretwork panels

This is a charming antique display rack, ideally suited to the entrance hall or kitchen. Solid joints and construction, delivered waxed, polished and ready for the home.

Search [London Fine for #18.8471](#) , or scan the QR code for more photos and details

DIMENSIONS

Max Width: 43cm (17")

Max Depth: 10.5cm (4.25")

Max Height: 29cm (11.5")

