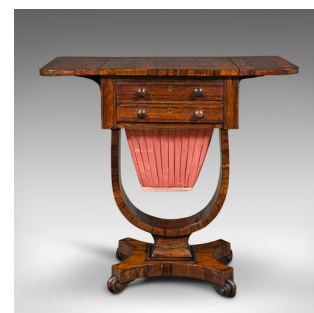
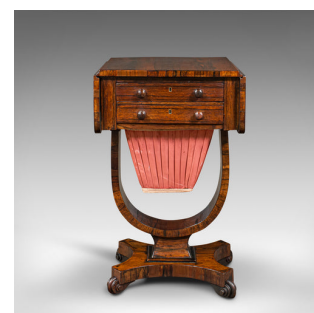
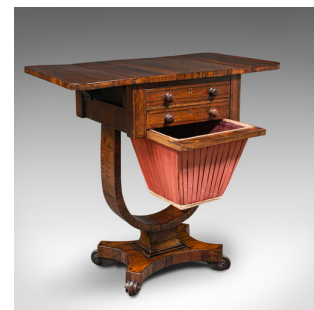


## Antique Drop Leaf Ladies Work Table, English, Sewing, Side, William IV, C.1835



### DESCRIPTION

Our Stock # 18.8435

This is an antique drop leaf ladies work table. An English, rosewood sewing or side table, dating to the William IV period, circa 1835.

- Fascinatingly appointed sewing table with wonderful late Georgian craftsmanship
- Displaying a desirable aged patina and in good order
- Superb stocks show excellent grain interest throughout
- Rich caramel hues beam beneath a wax polish finish
- Drop leaf top extends usefully, supported by articulated flying arms
- Pair of drawers to the front dressed with circular wooden pulls
- Faux drawer fascia to the reverse affords central room placement
- Sliding work bag with crimson damask to outside and contrasting golden brocade trim

- Of deep proportion, the work bag is lined with a quality dark ruby baize
- Unusual and highly attractive reverse demi-lune arch support unites the top with the base

- Delightful hyperboloid base stands upon a quartet of distinctive shaped bracket feet

Search [London Fine for #18.8435](#) , or scan the QR code for more photos and details

### DIMENSIONS

Max Width: 42cm (16.5")  
 Max Depth: 41cm (16.25")  
 Max Height: 70cm (27.5")  
 Extended Width: 73.5cm (29")  
 Extended Depth: 41cm (16.25")  
 Extended Height: 70cm (27.5")

### LIST PRICE

£1,495.00

