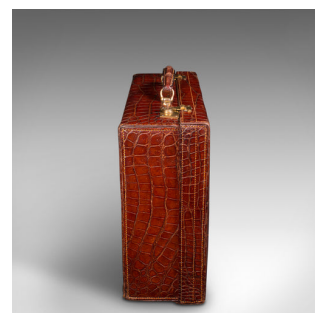


Antique Ladies Country Day Case, English, Crocodile, Suitcase, Edwards and Sons



DESCRIPTION

Our Stock # 18.8532

This is an antique ladies country day case. An English, crocodile suitcase by Edwards & Sons, dating to the early 20th century, circa 1920.

- Dashing case, petite in form and of superb quality
- Displays a desirable aged patina and in good order
- Richly tanned crocodile skin in a striking deep russet hue
- Contrasting saffron yellow stitching to edges
- Wonderfully tactile throughout and of superior finish
- Stout carry handle to leading edge set upon brass mounts
- Dressed with sliding clasps with through locks — in working order, key present
- Case opens upon leather stays to reveal the clean interior
- Caramel hues to the quality silk cotton lining, some slight loss present
- Maker's mark and royal warrant present, reads 'Edward & Sons, 161 Regent Street'

Street

Search [London Fine for #18.8532](#) , or scan the QR code for more photos and details

DIMENSIONS

Max Width: 43cm (17")
 Max Depth: 15.5cm (6")
 Max Height: 36cm (14.25")
 Interior Width: 39.5cm (15.5")
 Interior Depth: 31.5cm (12.5")
 Interior Height: 14cm (5.5")

