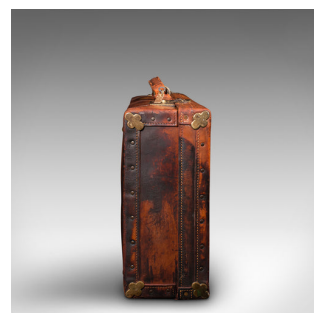


Large Antique Suitcase, English, Leather, Gentleman's Travelling Case, Edwardian



DESCRIPTION

Our Stock # 18.8533

This is a large antique suitcase. An English, leather and brass gentleman's travelling case by Tom Hill - Sloane Street, dating to the Edwardian period, circa 1910.

- Of superb size and finish, this case is a treat to carry
- Displays a desirable aged patina and in good order
- Quality leather with striking caramel hues, and wonderful patination
- Finished with matching caramel stitched seams to the edges
- Stout leather handle with bonded leather mounts and the initials C.H.W.C.
- Dressed with sliding clasps with working through locks – key present
- Opens upon leather strap stays to reveal the clean, waxed interior
- Press stud borders decorate the ends for further stability
- Fascinating brass shamrock mounts add protection to the corners
- Set the case down with reassurance upon protective brass studs
- Maker's mark reads Tom Hill - Sloane Street, London

Search [London Fine for #18.8533](#) , or scan the QR code for more photos and details

DIMENSIONS

Max Width: 71.5cm (28.25")
 Max Depth: 18.5cm (7.25")
 Max Height: 42cm (16.5")
 Interior Width: 67.5cm (26.5")
 Interior Depth: 38.5cm (15.25")
 Interior Height: 17.5cm (7")

LIST PRICE

£895.00

