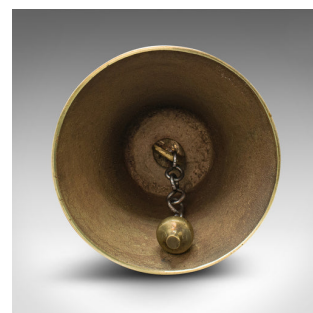
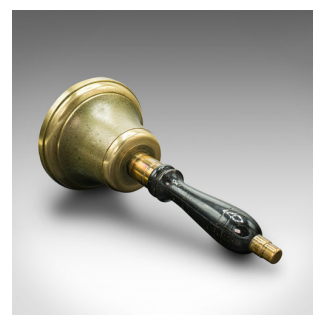
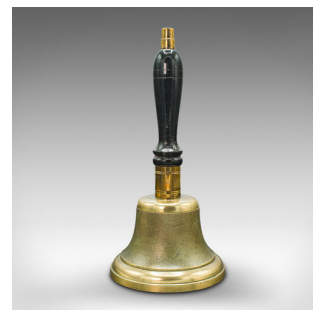


Antique Town Clerk's Hand Bell, English, Brass, School Yard Ringer, Edwardian



DESCRIPTION

Our Stock # 18.8547

This is an antique town clerk's hand bell. An English, brass and mahogany school yard ringer, dating to the Edwardian period, circa 1910.

- Delightfully presented hand bell, with decorative appeal
- Displays a desirable aged patina and in good order
- Brass bell with bright appearance and a stout flared rim
- Distinctive bands of crackle finish add a tactile finish
- Ebonised handle dressed with a prominent brass cap
- Easily discernible ring with a prominent clapper

This is a charming antique town clerk's hand bell, as useful today as it was over 100 years ago. Nicely presented and with a prominent ring. Delivered polished and ready to enjoy.

Search [London Fine for #18.8547](#), or scan the QR code for more photos and details

DIMENSIONS

Max Width: 15.5cm (6")

Max Depth: 15.5cm (6")

Max Height: 32.5cm (12.75")

LIST PRICE

£695.00

