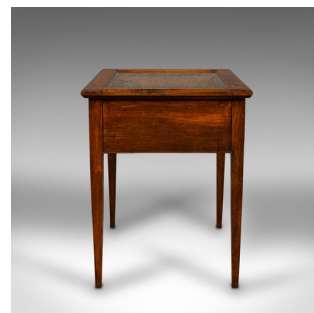


## Antique Jeweller's Display Cabinet, English, Bijouterie, Specimen, Victorian



### DESCRIPTION

Our Stock # 18.8619

This is an antique jeweller's display cabinet. An English, fruitwood and glass bijouterie table or specimen cabinet, dating to the Victorian period, circa 1900.

- Versatile and attractive display case, ideal for collectors or retail environments
- Displaying a desirable aged patina and in good order throughout
- Fruitwood presents deep russet hues, with quality sliding drawers
- Generously sized, bright glass top affords a superb view of the interior
- Arranged as three sliding trays, each dressed with quality green baize
- Accessed by bright brass circular pulls behind a fall-front opening
- The fall held securely with a shield-shape lock escutcheon — in working order, key present

- Offers a maximum clearance with a single tray of 11.5cm (4.5")
- Raised upon a quintet of gently tapering legs with square toes

This is a superb antique jeweller's display cabinet, with a bright glass viewing window ideally suited to displaying treasured items or merchandise. Solid joints and construction, delivered waxed, polished and ready for the home.

### DIMENSIONS

Max Width: 76.5cm (30")  
 Max Depth: 61.5cm (24.25")  
 Max Height: 78.5cm (31")  
 Tray Width: 57cm (22.5")  
 Tray Depth: 44.5cm (17.5")  
 Tray Height: 2cm (.75")  
 Display Glass Width: 60.5cm (23.75")  
 Display Glass Depth: 45.5cm (18")



Search [London Fine](#) for #18.8619, or scan the QR code for more photos and details

+44 (0) 207 1833 511

London Fine Ltd  
 The Antique Village  
 The Old Whiteways Cider Factory  
 Hele, Devon, EX5 4PW

sales@londonfine.co.uk  
 E. & O. E.