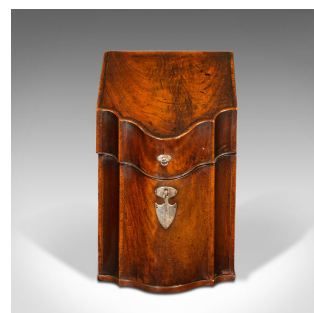
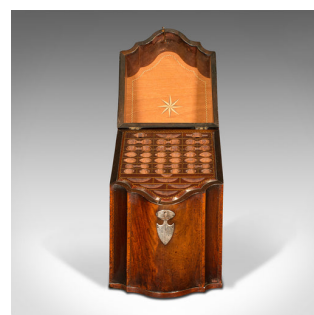


Antique Knife Box, English, Walnut, Cutlery Canteen, Fitted Interior, Georgian



DESCRIPTION

Our Stock # 18.8557

This is an antique knife box. An English, walnut cutlery canteen with fitted interior, dating to the Georgian period, circa 1800.

- Appealing an unusual, retaining its fitted interior
- Displays a desirable aged patina with some weathering commensurate with use
- Walnut presents deep russet hues and fine grain interest
- Boxwood inlays to the interior a testament to the quality of this example
- Of fascinating shield form, the canted lid opening smoothly on shield shaped hinges
- Lid interior inlaid with a star motif and contrasting boxwood and ebony borders
- Arranged for a canteen of 46 individual pieces or 34 pieces with tongs
- Dressed with a silver lock escutcheon — in working order, key present
- Finished to the base with a protective baize

This is a striking antique knife box, with original, quality fitted interior setting it apart from usual, later converted examples. Solid joints and construction, delivered waxed, polished and ready for the kitchen or dining room.

Search [London Fine for #18.8557](#), or scan the QR code for more photos and details

DIMENSIONS

Max Width: 22cm (8.75")

Max Depth: 25.5cm (10")

Max Height: 36.5cm (14.25")

LIST PRICE

£2,450.00

