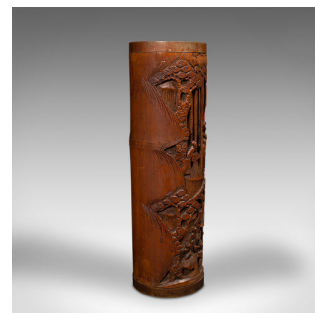
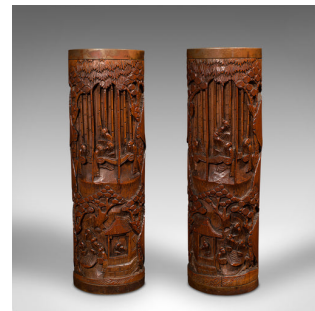


## Antique Dry Flower Vases, Chinese, Bamboo, Bitong, Brush Pot, Qing, Victorian



### DESCRIPTION

Our Stock # 18.8581

This is a large pair of antique dry flower vases. A Chinese, hand-carved bamboo stem sleeve or brush pot, dating to the late Victorian period, circa 1900.

- Superb bitong or traditionally carved brush pots, ideal for dry flower arrangements
- Displaying a wonderful aged patina, some splitting to the antique bamboo
- Skilfully carved with an abundance of detail, the bamboo presents rich caramel hues
- The scenes depict scholars within a bamboo forest, further decorated with pavilions
- Circular brass mounts to the rim and base enclose the bamboo stalk
- Excellent examples of Chinese craftsmanship during the late Qing dynasty

This is a striking and highly decorative pair of antique dry flower vases, useful as brush pots in the bitong tradition. Delivered polished and ready to display.

Search [London Fine for #18.8581](#) , or scan the QR code for more photos and details

### DIMENSIONS

First Pot Width: 10.5cm (4.25")  
 First Pot Depth: 11cm (4.25")  
 First Pot Height: 34.5cm (13.5")  
 Second Pot Width: 10.5cm (4.25")  
 Second Pot Depth: 11cm (4.25")  
 Second Pot Height: 34cm (13.5")

### LIST PRICE

£895.00

