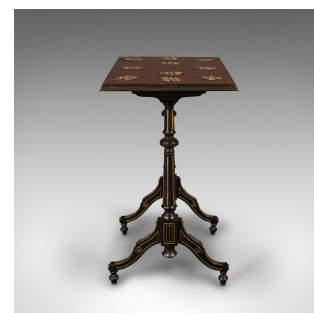
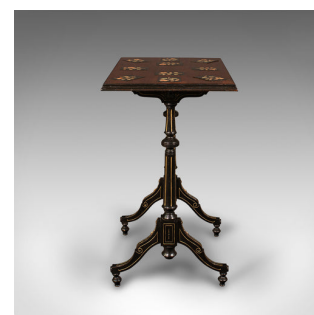


Antique Specimen Table, English, Inlaid, Occasional, Aesthetic Period, Victorian



DESCRIPTION

Our Stock # 18.8572

This is an antique specimen table. An English, mahogany and marble inlaid occasional table with Aesthetic period taste, dating to the Victorian era, circa 1880.

- Fascinating inlaid top over a wonderfully Gillows-esque base
- Displays a desirable aged patina and in very good order
- Select stocks with natural caramel hues to the top and ebonised to the frame
- Ten inset jet black marble tiles adorned with eye-catching Mother of Pearl inlays
 - Set upon a tiered edge moulding, each of the raised tiles decorated with foliate inlays
- Profusely gilded, the black frame beams with accents of golden hues
- Unmarked as such, the fluted legs and turned elements redolent of a Gillows piece
 - Raised upon squat cabriole legs, enhanced with scrolled knees and terminating in squat bun feet

This is a charming and unusual antique specimen table, wonderfully decorated with inset tiles and striking black and gold tones. A treat for any room, and a distinguished example of Aesthetic period furniture. Solid joints and construction, delivered waxed, polished and ready for the home

DIMENSIONS

Max Width: 63cm (24.75")
 Max Depth: 43cm (17")
 Max Height: 75.5cm (29.75")

LIST PRICE

£2,650.00

