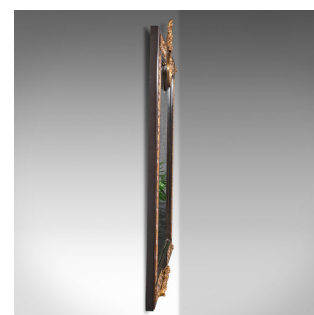
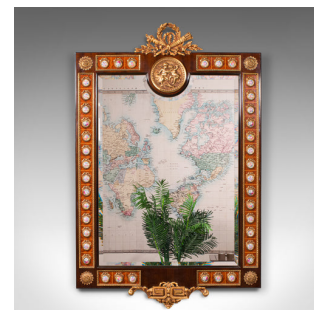


Large Vintage Decorative Mirror, Continental, Walnut, Overmantle, Italianate



DESCRIPTION

Our Stock # 18.8610

This is a superb quality large vintage decorative mirror. A Continental, walnut overmantle mirror in Italianate taste, dating to the late 20th century, circa 1970.

- Incredibly ornate mirror, with excellent craftsmanship and highly distinctive
- Displays a desirable aged patina and in very good order
- Walnut frame shows deep chestnut hues and fine grain interest
- Large and pleasingly heavy, the depth of quality is enviable
- Generously sized mirror plate presents wonderfully, with minimal foxing
 - Prominent gilt metal details, with a striking laurel wreath pediment over a relief medallion of playful cherubs
 - Set within the upper edge, the bevelled glass skilfully follows the curvature of the inset medallion
 - Forty enamel cameos with colourful foliate bouquets mounted upon kingwood inlays in gilt frames
 - Each corner accentuated with gilt metal flowerheads, the lower rail hosting a decorative mount
 - Dressed to the rear with a heavy, metal hanging chain, for ease of wall mounting

DIMENSIONS

- Max Width: 77.5cm (30.5")
- Max Depth: 5cm (2")
- Max Height: 118.5cm (46.75")
- Mirror Plate Width: 58cm (22.75")
- Mirror Plate Height: 79.5cm (31.25")

LIST PRICE

£2,450.00



Search [London Fine for #18.8610](#), or scan the QR code for more photos and details

+44 (0) 207 1833 511

London Fine Ltd
The Antique Village
The Old Whiteways Cider Factory
Hele, Devon, EX5 4PW

sales@londonfine.co.uk
E. & O. E.