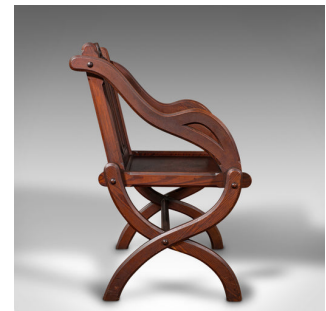
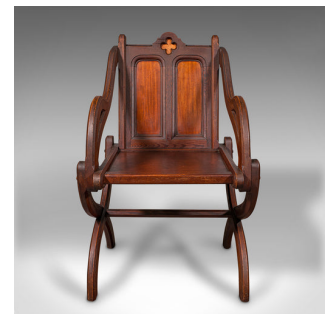


Pair Of Antique Glastonbury Chairs, English, Decorative Armchair, Gothic Revival



DESCRIPTION

Our Stock # 18.8653

This is a pair of antique Glastonbury chairs. An English, pitch pine decorative armchair with Gothic overtones, dating to the late Victorian period, circa 1900.

- Two delightful Glastonbury chairs, offering superb form and detail
- Displaying a desirable aged patina and good order throughout
- Quality pitch pine stocks shows fine grain interest and deep russet hues
- Excellent Gothic revival taste and motif, with delicate carved forms
- The top rail hosts a recessed carved quarterfoil, and dual field panels accentuated in a lighter caramel hue
 - Serpentine, striking arms finished with canted corners, and pierced demi-lune cut-outs
 - Flat seat squab recessed gently inside the front apron at a comfortable height of 44.5cm (17.5")
 - Standing upon a quartet of square section legs, in a fascinating curved X-form

Legs united by an unusual and eye-catching octagonal stretcher rail

This is a striking pair of antique Glastonbury chairs with enduring Gothic revival overtones and quality stocks. Finished to a flourish throughout and sure to enhance any room. Solid joints and construction, delivered waxed, polished and ready for the ...

+44 (0) 207 1833 511

Search London Fine for #18.8653, or scan the QR code for more photos and details

DIMENSIONS

- Max Width: 59cm (23.25")
- Max Depth: 62cm (24.5")
- Max Height: 90cm (35.5")
- Seat Width: 46cm (18")
- Seat Depth: 40cm (15.75")
- Seat Height: 44.5cm (17.5")

LIST PRICE

£1,795.00



sales@londonfine.co.uk

E. & O. E.

London Fine Ltd
The Antique Village
The Old Whiteways Cider Factory
Hele, Devon, EX5 4PW