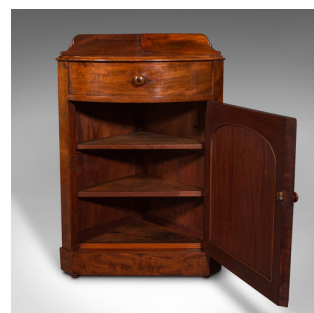


Antique Corner Dressing Cupboard, English, Gentleman's Night Stand, Victorian



DESCRIPTION

Our Stock # 18.8685

This is an antique corner dressing cupboard. An English, mahogany gentleman's night stand, dating to the mid Victorian period, circa 1860.

- Of fine appearance, with a delightful flying drawer
- Displays a desirable aged patina and in very good order
- Select stocks show fine grain interest and rich russet hues
- Free-standing corner cupboard, with a depth at 90-degrees of 41.5cm (16.25")
- Low upstand to the demi-lune top surface, ideal for a lamp or mirror
- Superb flying drawer swivels outwards with a small circular pull
- Striking cabinet door with flame mahogany panel opens to reveal a three shelf interior
- Standing upon squat bun feet beneath a stout plinth foot

This is an attractive antique corner dressing cupboard, with superb grain interest and of appealing quality. Solid joints and construction, delivered waxed, polished and ready for the home.

Search [London Fine for #18.8685](#), or scan the QR code for more photos and details

DIMENSIONS

Max Width: 59cm (23.25")

Max Depth: 44.5cm (17.5")

Max Height: 86.5cm (34")

Depth at Right Angle to Wall: 41.5cm (16.25")

