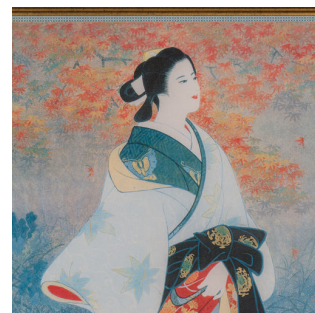
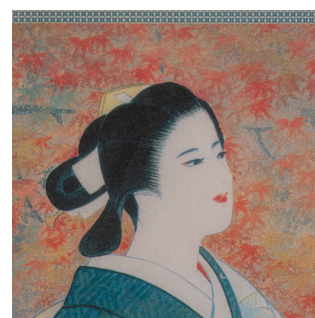
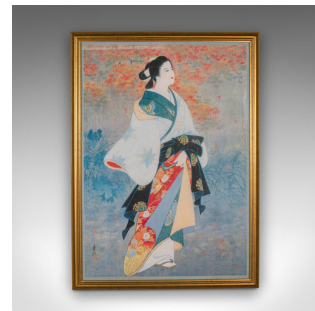


## Vintage Geisha Print, Japanese, Framed, Female Figure, Art Deco, Decorative Art



### DESCRIPTION

Our Stock # 18.8678

This is a vintage geisha print. A Japanese, gilt framed female figure from the late Art Deco period, circa 1950.

- Evocative woodblock-type geisha figure with wonderful colour
- Displays a desirable aged patina and in good order
- Striking costume detail and delicate maple leaf background
- Presented within a tasteful gilt frame with good, clear glass panel
- Dressed to the rear with hanging wire for ease of mounting

This is a superb vintage geisha print, with fine colour and detail. Ideally suited to collectors of Japanese iconography or as distinctive decor. Delivered polished and ready to display.

Search [London Fine for #18.8678](#), or scan the QR code for more photos and details

### DIMENSIONS

Max Width: 56.5cm (22.25")

Max Depth: 2.5cm (1")

Max Height: 78cm (30.75")

Print Width: 50.5cm (20")

Print Height: 71.5cm (28.25")

### LIST PRICE

£695.00

