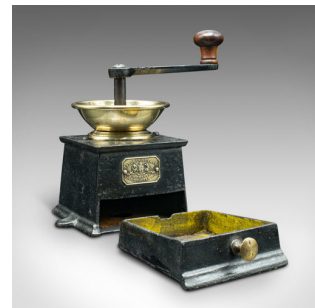


## Antique Personal Coffee Grinder, English, Cast Iron, Brass, Mill, Victorian



## DESCRIPTION

Our Stock # 18.8646

This is an antique personal coffee grinder. An English, cast iron and brass mill, dating to the late Victorian period, circa 1900.

- Superb coffee mill, ideal for display or affixed to the counter top
- Displays a desirable aged patina and in very good order
- Stout cast iron body and removable collection tray show deep black tones
- Contrasting polished brass collar and small circular pull with warm golden hues
- Turned wooden ferrule sits atop the serpentine grinding arm
- Set within the tapering collar, the visible mechanism actuates smoothly
- Collection tray shows remains of a later, hand-painted finish
- Maker's plaque to front reads 'Baldwin, Son & Co, Improved Light Coffee Mill
- Engraved across the top surface with a No.1 model number
- Cast mounting loops set within the lower edge for countertop mounting

Search [London Fine](#) for #18.8646 , or scan the QR code for more photos and details

## DIMENSIONS

Max Width: 13.5cm (5.25")

Max Depth: 12cm (4.75")

Max Height: 19.5cm (7.75")

Width Including Handle: 20cm (7.75")

