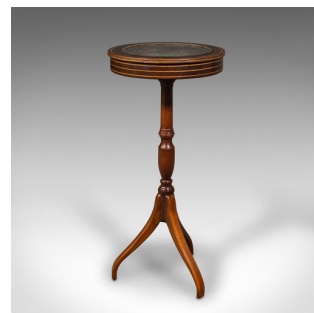
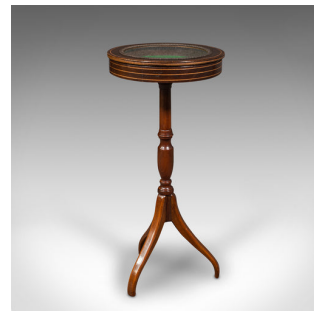


## Small Antique Bijouterie Table, English, Beech, Glass Display Stand, Edwardian



### DESCRIPTION

Our Stock # 18.8668

This is a small antique bijouterie table. An English, beech and mahogany glass display stand, dating to the Edwardian period and later, circa 1910.

- Charming and petite, with a clear glass viewing window
- Displays a desirable aged patina and in good order
- Select stocks show fine grain interest and rich caramel hues
- Quality glass in clear, bright condition over a bright green baize
- The shallow lid accentuated with a gilt metal braided window frame and boxwood inlay
- The continuous bands of inlay decorate the circumference of the drum-shaped apron
- Support stand presents deftly turned balusters and collars
- Raised upon a trio of slender cabriole legs

This is a delightfully small antique bijouterie table, with fine colour and a bright showcase to the top. Solid joints and construction, delivered waxed, polished and ready for the home.

Search [London Fine for #18.8668](#), or scan the QR code for more photos and details

### DIMENSIONS

Max Width: 32.5cm (12.75")  
 Max Depth: 32.5cm (12.75")  
 Max Height: 71.5cm (28.25")  
 Internal Width: 27cm (10.75")  
 Internal Depth: 27cm (10.75")  
 Internal Height: 2.5cm (1")

