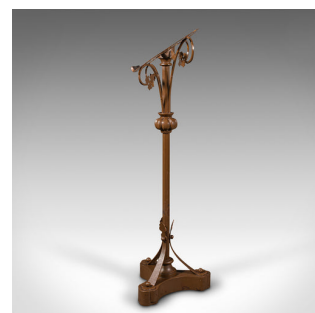
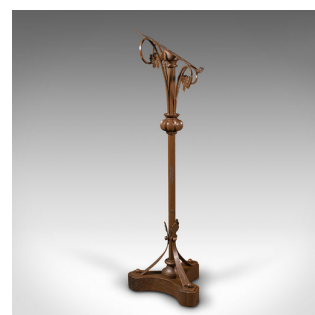
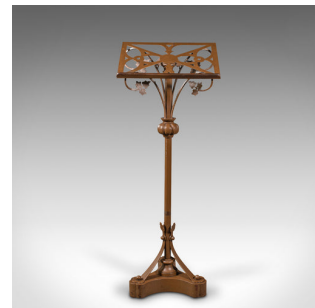


## Antique Maître D' Stand, Continental, Lectern, Easel, Art Nouveau, Victorian



### DESCRIPTION

Our Stock # 18.8674

This is an antique maître d' stand. A Continental, wrought iron lectern or easel with Art Nouveau taste, dating to the late Victorian period, circa 1900.

- Flourishes abound to this delightful Art Nouveau period stand
- Displays a desirable aged patina and in good order
- Wrought iron hand-painted throughout in a light chestnut hue
- Perfect for the front-of-house, public speaking or the artist's smaller canvas
- The angled lectern stand presents a striking form with its pierced appearance
- Serpentine brackets terminate in charming ivy leaf clusters beneath the rest
- A prominent acanthus bulb collar sits at the apex of the upstand
- Standing upon a deep trefoil base, braced to the upstand with a repeat of the ivy motif

This is a superb antique maître d' stand, a wonderful sight for guests or patrons in within an institution, or offering an eye-catching rest for the public speaker. Solid joints and construction, delivered polished and ready to serve.

Search [London Fine for #18.8674](#) , or scan the QR code for more photos and details

### DIMENSIONS

Max Width: 50.5cm (20")  
 Max Depth: 38cm (15")  
 Max Height: 135cm (53.25")  
 Rest Width: 50.5cm (20")  
 Rest Depth: 2.5cm (1")  
 Rest Height: 33.5cm (13.25")

### LIST PRICE

£1,275.00

